

Important Product News OptiFlex[®] 2

St. Gall, May 8th 2012

Dear Business Partner

The following sections contain important information about new and planned features, solved and known issues. Please read them carefully and get back to us, in case you have questions.

1. New Features, Solved Issues

- a) Starting early May, OptiFlex2 units get shipped with SW V 1.04 installed. With this SW, below listed new features have been introduced / issues have been solved ...
- Operation of Tribo gun is now supported. (See "OptiFlex2 CG09 Manual gun control unit – Operating instructions and spare parts list", chapter "Product description / Typical Properties – Characteristics of the function / Operation and configuration of the tribo gun" on how to activate this feature)
 - H13 tests routines were designed too sensitive. This has been corrected.
 - H91 and H11 tests routines have been improved, allowing better detection of the respective defects.
- b) Starting early May, OptiFlex2 guns will be shipped with new designed threaded sleeves. The new versions are of smoother shape and black color. They are 100% backwards compatible, have the same part-no (1007 229 – NF20, NF21 and NS04 / 1008 326 – NF24) and prices as the previous versions.

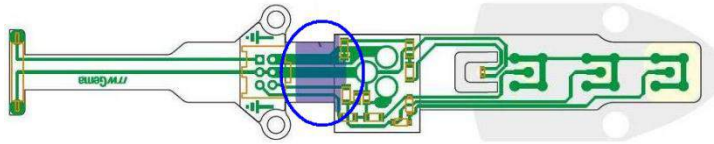


new design threaded sleeve

- c) A few cases got reported where the Optiflex2 controller display got completely blank, but the unit remained fully operational. The issue has been analyzed, countermeasures have been positively field tested and are currently being phased into production. In the meantime, affected units can be fixed by installing a special set of circuit boards for the OptiFlex2 controller. Kindly contact the Gema Helpdesk and you will be provided with the items required free of charge.

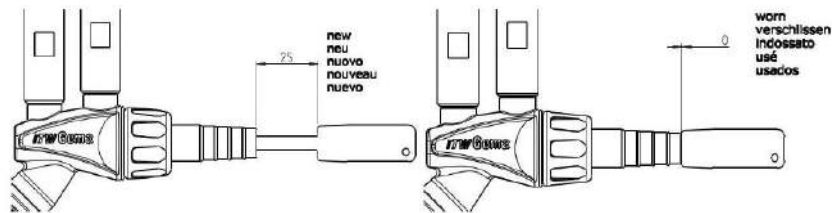
Important note: This problem occurs only in isolated cases of extreme electrically polluted environments. No units operated under normal conditions have been reported showing this problem.

- d) Some cases got reported where H91 message occurred although an original Optiflex2 gun / cascade was used. The cause of this has been identified as damages to the flex print of the remote control assembly. The design of this flex print has now been enhanced (see marked section below) to prevent such damages. OptiFlex2 guns with new design flex prints will be shipped starting mid May. Kindly contact the Gema Helpdesk should you come across such problems in your territory and you will be provided with replacement parts free of charge.



2. Future releases

- a) The OptiSpray F model is in the process of being moved into production and will become available shortly. Detailed information will be published by a separate newsletter.
- b) The wear detection device (1008 792) for the IG06 insert sleeve has been positively field tested and is now being phased into production. Its availability is projected for Q2 and will be announced by separate a newsletter.



3. Important Information

- a) In addition to its sealing function, the cascade space seal (now installed on all GM03 as announced in the last OptiFlex2 newsletter) also enhances fixation of the cascade inside the gun. Although there is no need to upgrade all guns already in the market with this seal, it is recommended to do so for guns exposed to heavy external mechanical shock.

Best regards,

Christian Gföhler
Business Unit Manager
Manual Units and Spare Parts